



Patient Involvement

Jörn Kiselev, Geriatrics Research Group, Charité Universitätsklinik Berlin

www.projectintegrate.eu

This project has received funding from the European Union's Seventh Framework Programme for research, technological development and demonstration under grant agreement no. 305821



Objectives of WP9

- Gain insight into patient involvement
- Conclude on success factors of increasing patient involvement
- Identify how patient involvement can contribute to better integration of care



Methodology

Method	N.	SDM	Patient education	Self Management
Review	64 reviews and meta-analyses	✓	✓	✓
Questionnaire	283 participants – 141 healthy – 142 with chronic conditions	✓	☹	☹
Focus Groups	Hospital sector – 9 HP – 6 patients Family medicine – 6 HP – 3 patients	✓	✓	✓

Results

- Age, socioeconomical status and severity of the condition has an influence on the willingness of participation
- There is no correlation between willingness and experience of participation



Results

- No distinct concepts of PI from the patients' perspective
- Health literacy has to be acknowledged as a primary prerequisite for PI
- Holistic approach of patient education is necessary to prepare the patient for self-managing his condition
- HP education does only insufficiently reflect the patients' need for PI



Prerequisites for PI

- Patients
 - Health literacy central prerequisite
 - “Translation“ of relevant information for the patients
 - Time!
 - Consequences of the decision to be made!
 - Trust!
- Health Professionals
 - Time!
 - Communication with the patient
 - Team structure
 - Legal framework

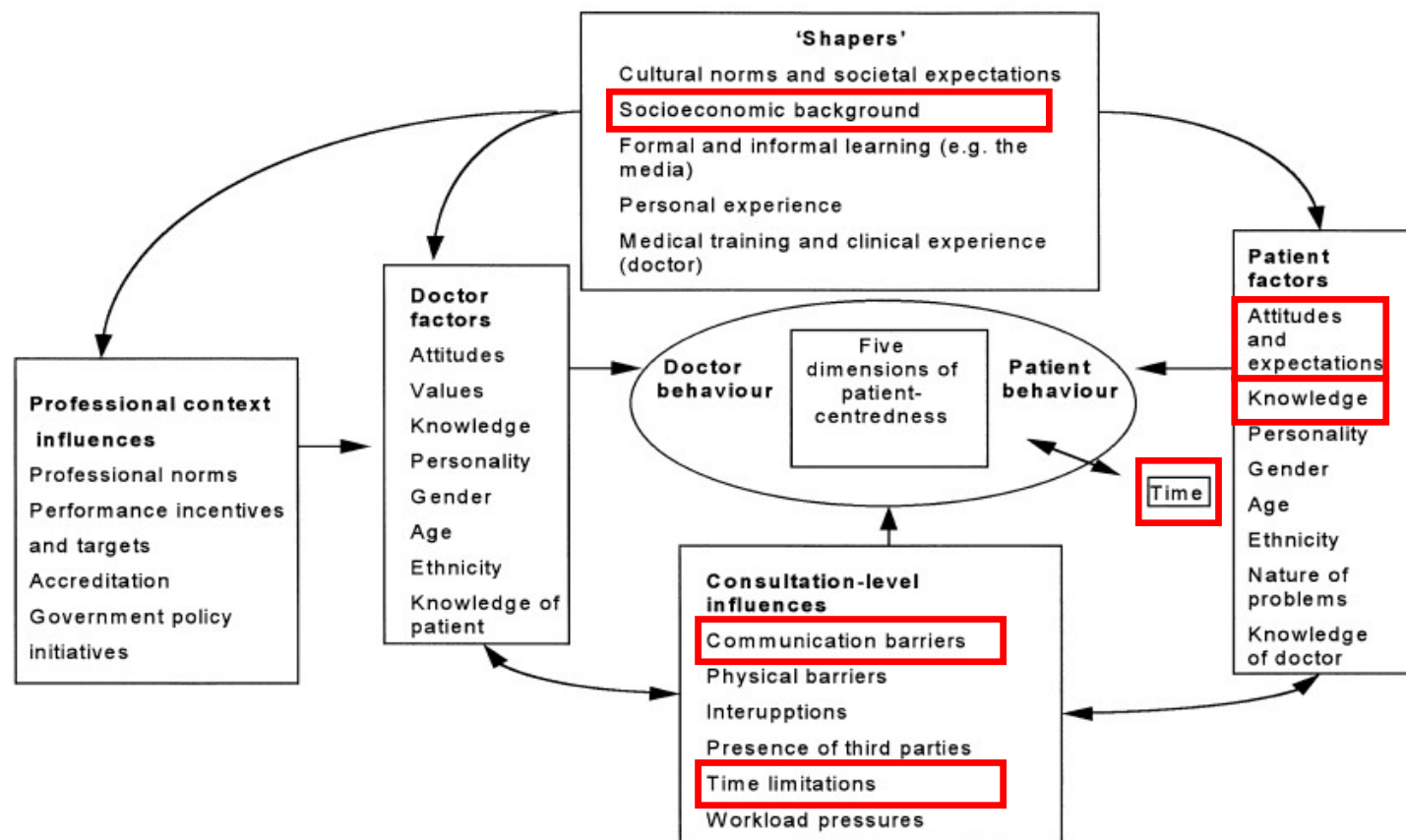
• DISCUSSION!



References

1. Thompson AG. The meaning of patient involvement and participation in health care consultations: a taxonomy. *Soc Sci Med*. 2007;**64**(6):1297–310.
2. Targett Katherine. An Introduction to Clinical Governance and Patient Safety. *Occup Med*. 2011;**61**(4):283.
3. Ralii F, Soleimani M, Seyed-Fatemi N. Concept Analysis of Participation of Patient with Chronic Disease: Use of Hybrid Model. *Iran J Nurs*. 2010;23(67):35–48.
4. A New Definition of Patient Engagement: What is Engagement and why it is important? Center for Advancing Health 2010. http://www.cfah.org/file/CFAH_Engagement_Behavior_Framework_current.pdf
5. Mead N, Bower P. Patient-centredness: a conceptual framework and review of the empirical literature. *Soc Sci Med* 1982. Oktober 2000;51(7):1087–110.

Patient Centeredness



Model of patient centeredness by Mead and Bower (2000)

Model of PI

